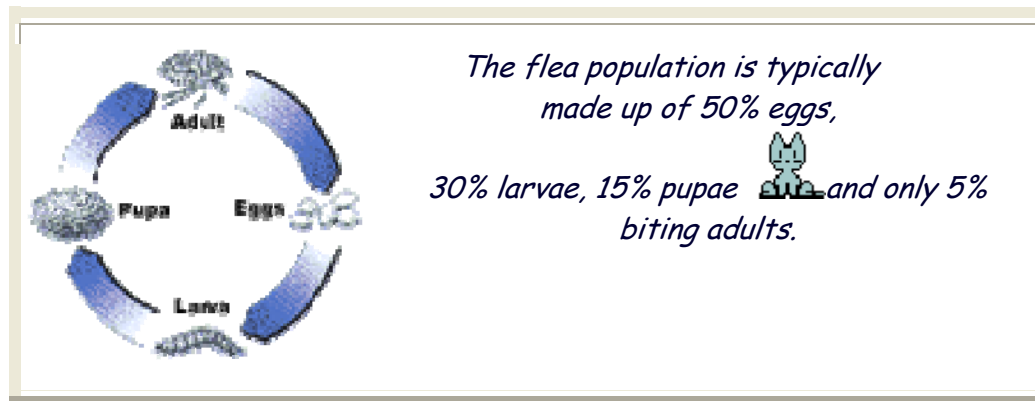


Fleas? Never Again! Life Cycle



Flea Life Cycle and Habits

- Fleas pass through a complete life cycle of four stages.



- Completion of the life cycle from egg to adult varies from **two weeks to eight months**.




6916 Harrisburg Road
Charlotte, NC 28215
704.537.8405

www.clearcreekanimalhospital.com

- Normally **the female flea lays about 15 to 20 eggs per day** up to 600 in a lifetime.
- Usual hosts for fleas are dogs, cats, rats, rabbits, mice, squirrels, chipmunks, raccoons, opossums, foxes, chickens, and humans.
- **Eggs** loosely laid in the hair, **drop out where the pet rests, sleeps or nests** (rugs, carpets, upholstered furniture, cat or dog boxes, kennels, sand boxes, etc.)
- **Eggs hatch in two days to two weeks** into larvae found indoors in floor cracks & crevices, along baseboards, under rug edges and in furniture or beds.

Sand and gravel are very suitable for flea development



 *which is the reason fleas are erroneously called "sand fleas."*

- **Outdoor development occurs** in sandy gravel soils (moist sand boxes, dirt crawlspace under the house, under shrubs, etc.) **where the pet may rest or sleep.**
- **Larvae** are blind, avoid light, pass through three larval stages and **take a week to several months to develop.**
- **Their food consists of digested blood** from adult flea feces, dead skin, hair, feathers, and other organic debris.
- **Pupa mature** to adulthood **within a** silken **cocoon** woven by the larva to which pet hair, carpet fiber, dust, grass cuttings, and other debris adheres.
- In about five to fourteen days, **adult fleas can emerge or may remain resting in the cocoon until the detection of vibration** (pet and people movement), **pressure** (host animal lying down on them), **heat, noise, or carbon dioxide** (meaning a potential blood source is near).




6916 Harrisburg Road
Charlotte, NC 28215
704.537.8405

www.clearcreekanimalhospital.com

 *Most fleas survive the winter* 
in the larval or pupal stage
and grow best during warm, moist winters and spring.

- **Adult fleas cannot survive or lay eggs without a blood meal**, but may hibernate from two months to one year without feeding.
- **There is often a desperate need for flea control after a family has returned from a long vacation.** The house has been empty with no cat or dog around for fleas to feed on. When the family and pets are gone, flea eggs hatch and larvae pupate.
- The adult fleas fully developed inside the pupal cocoon remains in a kind of "limbo" for a long time until a blood source is near. The family returning from vacation is immediately attacked by waiting hungry hordes of fleas. (In just 30 days, 10 female fleas under ideal conditions can multiply to over a quarter million different life stages.)

Completely developed adult fleas can live for several months without eating,
as long as they do not emerge from their cocoons. 

- **Newly emerged adult fleas live only about one week if a blood meal is not obtained.**
- **Optimum temperatures for the flea's life cycle are 70°F to 85°F and optimum humidity is 70 percent.**
- **Breaking the cycle with an [Insect Growth Regulator](#) , not just killing the few adults is the secret to flea control.**



**6916 Harrisburg Road
Charlotte, NC 28215
704.537.8405**

www.clearcreekanimalhospital.com